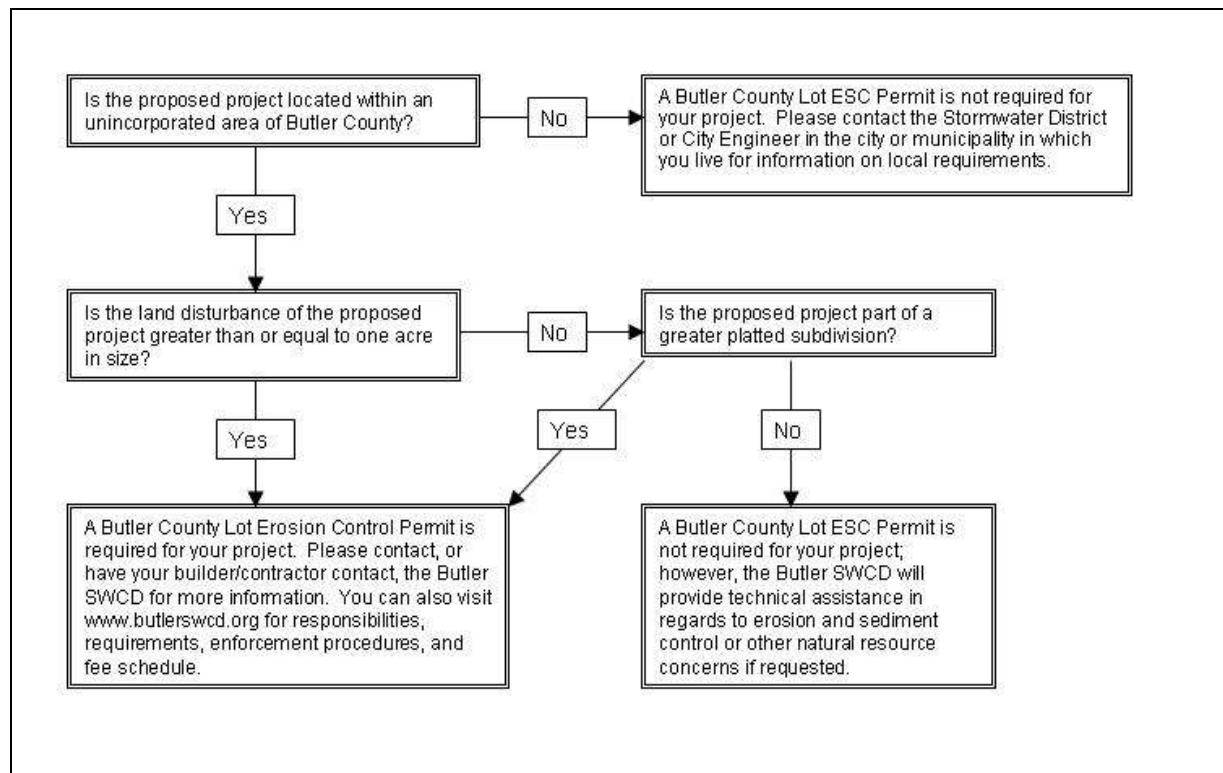


The Butler SWCD provides free technical assistance on natural resource issues such as drainage problems, streambank erosion, and pond management. In addition to this, the Butler SWCD enforces County erosion and sediment control requirements. New commercial and residential subdivision development requirements are enforced through the Butler County Earthmoving Permit. Individual lot development project requirements are enforced through the Butler County Lot Erosion and Sediment Control Permit.

The purpose of this pamphlet is to explain the role of the Butler SWCD with regard to natural resource issues and erosion and sediment control enforcement. Part I contains a list of questions that will help determine which projects require a Butler County Lot Erosion and Sediment Control Permit and are, therefore, subject to certain regulations and enforcement procedures. Part II contains information for land and/or homeowners with natural resource questions/concerns. The Butler SWCD, in general, has no enforcement power over common natural resource issues such as streambank erosion, but can provide technical and educational assistance to all Butler County residents. If, however, the natural resource issue is a direct cause of a Butler County Lot ESC permitted project, enforcement action can be taken.

PART I: Butler County Lot Erosion and Sediment Control (ESC) Permit*



*The Butler County Lot ESC Permit applies to individual lot land disturbances and does not supercede requirements set forth in the Butler County Earthmoving Permit for residential and commercial subdivision developments. For more information on the Butler County Earthmoving Permit please contact our office or visit www.butlerswcd.org.

Part II: Natural Resource Issues

Butler County's soil and water resources are an invaluable asset to residents and landowners, providing drinking water and food as well as habitat for wildlife. The volatile nature of these resources, however, can make their management difficult.

The Butler SWCD staff is committed to providing free expert technical assistance and advice on natural resource management issues. If you are currently experiencing problems due to streambank erosion, poor drainage, flooding, etc. or you have questions regarding effective pond management, private vs. public drainage easements, or Ohio's Drainage Laws, please call our office to speak with a staff member or to schedule an appointment. The Butler SWCD also has many publications and instructional materials that could aid in solving your natural resource management problems. Most of these materials are available on our website and all are available upon request. Please reference the following list for examples of these publications.

Website Publications

- *Homeowner's Conservation Guide*
- *Drainage Around Your Home*
- *Look Before You Buy*
- *Ponds: For Work or Play*
- *Sealing Leaking Ponds and Reservoirs*

Other Available Publications

- *Ohio's Drainage Laws*
- *Rivercourse: Natural Stream Processes*
- *Responsibilities, Improvements and Maintenance of Storm Sewers, Detention Basins and Water Courses*

Erosion and Sediment Control Responsibilities and Natural Resource Issues for Butler County, Ohio



Butler Soil and Water Conservation District
1810 Princeton Road
Hamilton, OH 45011
Phone: 513-887-3720
Fax: 513-785-6668
www.butlerswcd.org